

Appendices

Property and Street Maintenance

Many people have expressed pride in the West End. However, some concerns have been raised regarding property and street maintenance issues. Specifically we have heard:

- derelict vehicles throughout the area
- commercial garbage storage containers are not screened
- poor maintenance of front yards
- high hedges at road intersections interfering with street sight lines
- industrial uses lacking proper buffering and screening
- many cars parked in driveways of single family homes.

Action

- Issues relating to Property and Maintenance By-law, and Zoning By-law regulations, may be addressed by site inspection to establish their applicability.
- The Region's voluntary derelict motor vehicle program to remove inoperative vehicles may be utilized. It is available at no cost to the owner.
- Residents can be encouraged to clean and maintain their properties.
- Some non-conforming industrial uses will eventually disappear through redevelopment.
- Lane off Landsend needs to be paved.
- Lane between Dean and Walter Street requires patching up.

Water Quality

There have been concerns expressed relating to the quality of municipal water.

Comment

- Water mains in a number of streets are being replaced and there is, as well, a program of water treatment with phosphate. The quality of water is gradually improving.

Community Spirit

The concern has been expressed over an apparent lack of community involvement, such as in activities for kids, and poor front yard maintenance.

Action

- Consider forming groups and committees to involve residents in organizing and participating in community activities for young and old.

Parking

Parking has been identified as an issue on Dufferin Street. Too many cars seem to be parked on the Street hence reducing the travel portion of roadway and making driving and walking difficult.

Action

- The matter had been raised once before; the City is to look into it to improve the conditions.

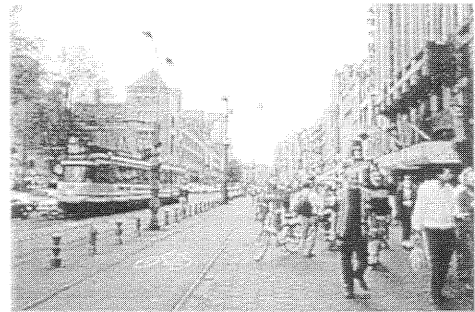
Examples of Pedestrian & Bicycle Pathways



Pedestrian/bicyclists separation, Bristol
Source: *Sustran: Shared Routes Information Sheet*



N101 - I6a Amsterdam



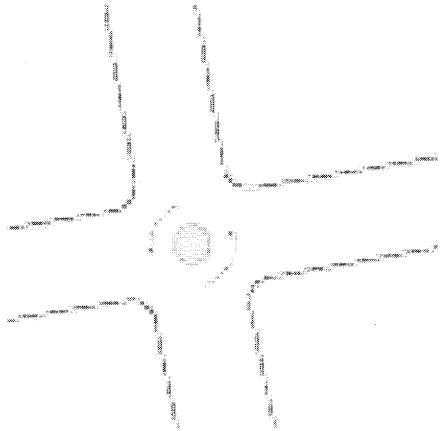
Bicycle lane *Tin-Chee Wu*



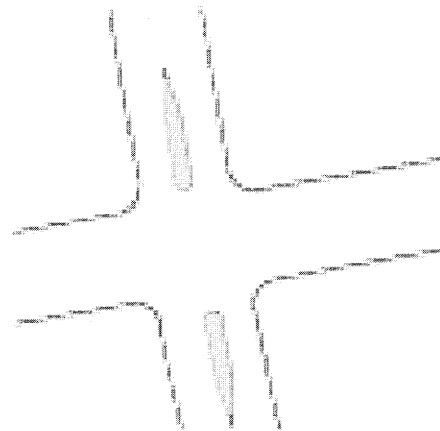
Curb separator, Florence

Traffic Calming Measures – Speed on Residential Street

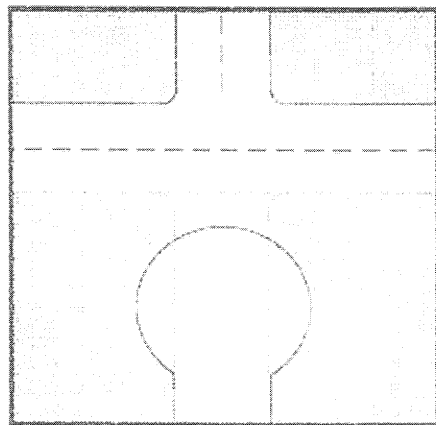
A number of traffic calming measures have been experimented with elsewhere. Some of which may be applicable to Logan Street.



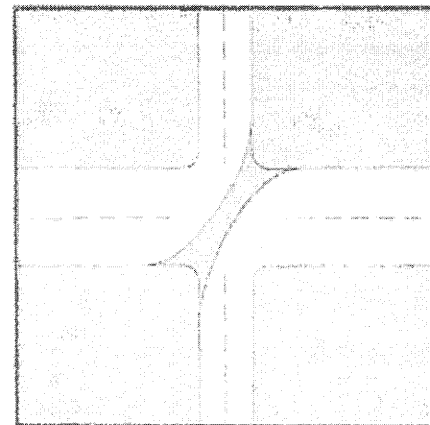
Traffic Circle



Intersection



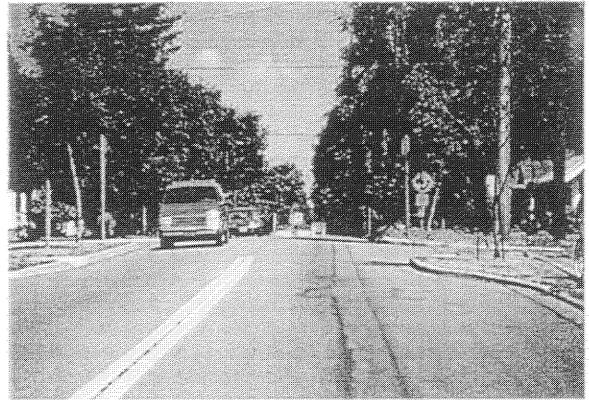
Close street



Diagonal diversion



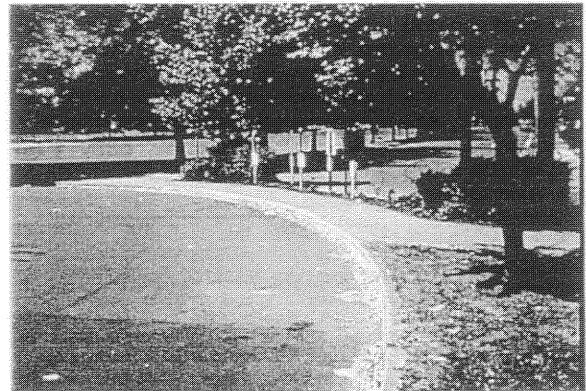
Curb extension



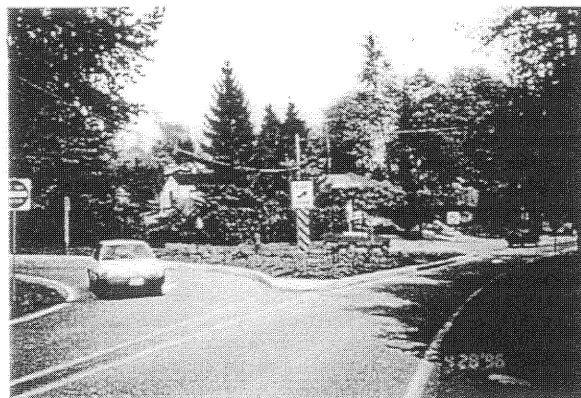
Curb extension



Traffic circle, Seattle



Diagonal diversion



Semi diversion

Source: http://www.trans.ci.portland.or.us/Traffic_Management/

Example of Use of Lanes in New Communities

The photograph to the right illustrates some of the features of the community of Cornell. Noticeable is the use of rear lanes.



***Open Space System Analysis
&
Commercial Structure Analysis***

WEST END COMMUNITY IMPROVEMENT PLAN

LEGEND

MAJOR TRAILS

- TRANS CANADA TRAIL
- SECONDARY TRAIL
- ALTERNATE ROUTE

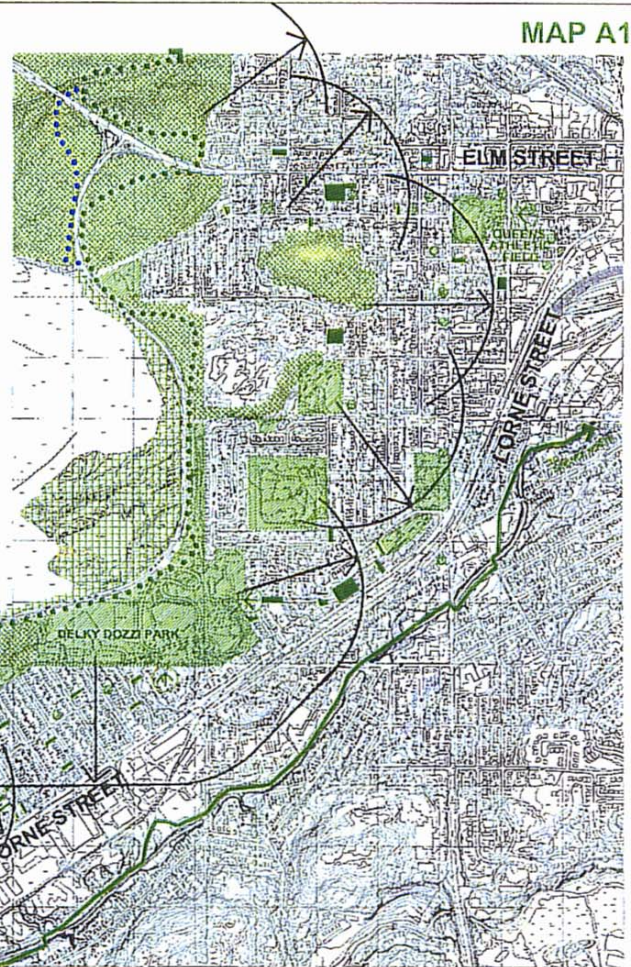
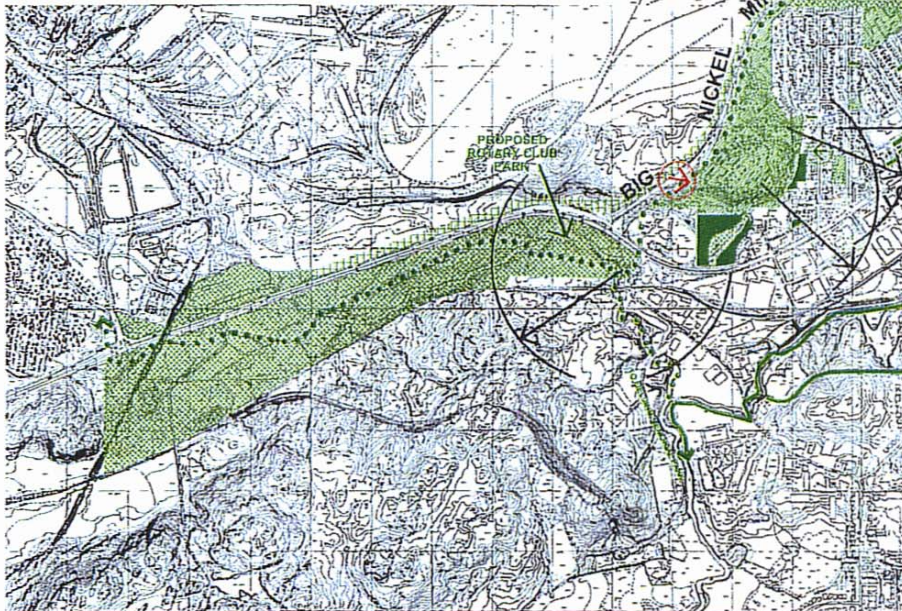
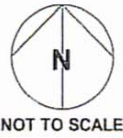
OPEN SPACE

- EXISTING OPEN SPACE
- PROPOSED PARK / LANDSCAPING
- VACANT LAND
- IMPROVEMENT

- WALKING DISTANCE RADIUS (400 METRES)

ACCESS POINTS

- DYNAMIC EARTH / DOZZI PARK
- IMPROVED



OPEN SPACE SYSTEM ANALYSIS



THE GOVERNMENT OF CANADA IS A PARTNER IN THIS INITIATIVE



Human Resources
Development Canada

Développement des
ressources humaines Canada




Canada

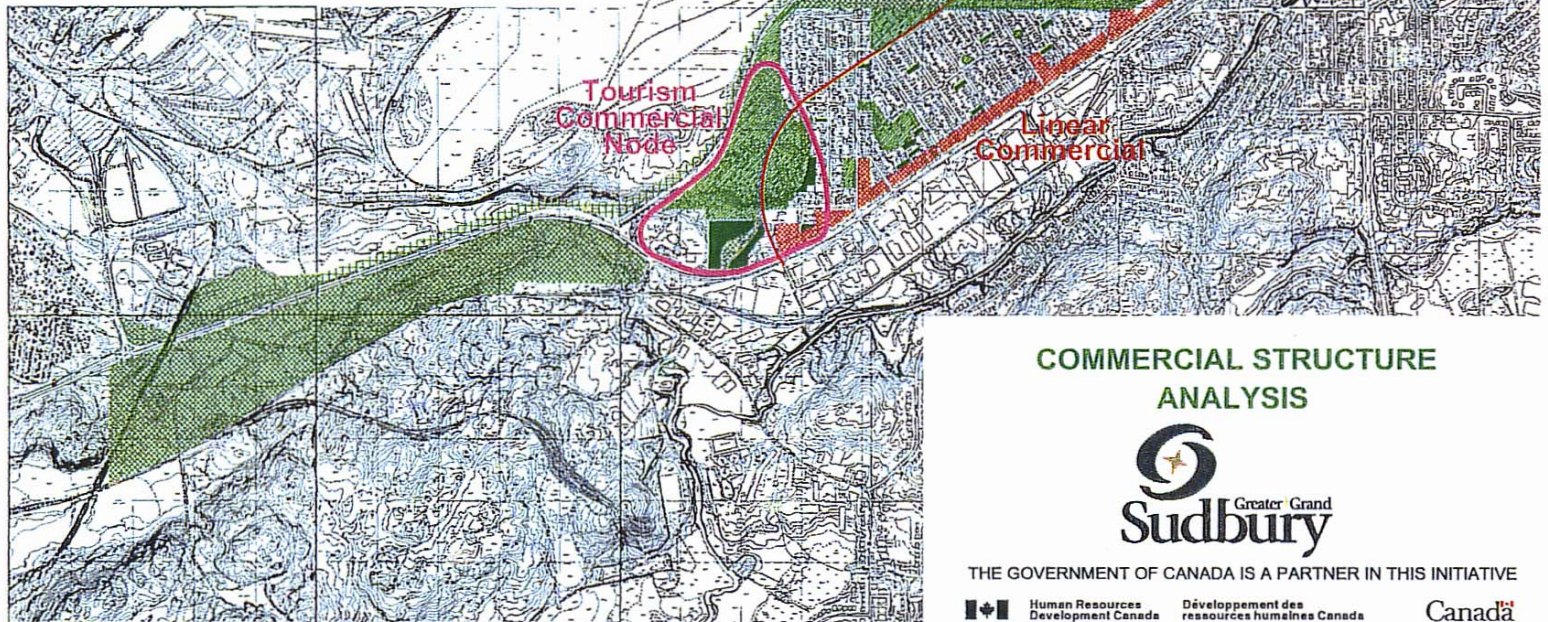
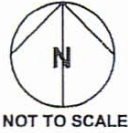
WEST END COMMUNITY IMPROVEMENT PLAN LEGEND

OPEN SPACE

-  EXISTING OPEN SPACE
INSTITUTIONAL AND RECREATIONAL
(CHURCHES, CLUBS, PARKS PLAYGROUNDS AND SCHOOLS)
-  PROPOSED PARK / LANDSCAPING
-  VACANT LAND
-  IMPROVEMENT

COMMERCIAL

-  EXISTING
-  WALKING DISTANCE
RADIUS (400 metres)
-  TOURIST COMMERCIAL



COMMERCIAL STRUCTURE ANALYSIS



THE GOVERNMENT OF CANADA IS A PARTNER IN THIS INITIATIVE



Human Resources
Development Canada

Développement des
ressources humaines Canada

