



CITY OF GREATER SUDBURY

*Skate Parks*

*Supporting Healthy  
Lifestyles*



[www.millenniumskatepark.com](http://www.millenniumskatepark.com)

# *Presentation Objectives*

- ★ Leisure Master Plan
- ★ Existing & Future Skate Parks
- ★ Minnow Lake Skate Park Proposal:
  - ★ Introduction of the Minnow Lake Skate Park Committee
  - ★ Background/history of skateboarding
  - ★ Skate park design
  - ★ Funding/partnerships

# ***Parks, Open Space and Leisure Master Plan***

- ✦ The June 2004 Plan recommends:
  - ✦ a permanent skate park in each area outside the former City of Sudbury, for a total of 6.
  - ✦ 3 permanent skate parks be established in the former City of Sudbury.

# *Existing Skate Parks in the City*

<b>Ward 1</b>	Gatchell	Delki Dozzi <i>tennis court</i>
<b>Ward 1</b>	Copper Cliff	<i>McClelland Arena parking lot</i>
<b>Ward 1</b>	Lively	T.M. Davies C. C. <i>parking lot</i>
<b>Ward 2</b>	Azilda/Chelmsford	<i>Floor pad inside both arenas</i>
<b>Ward 2</b>	Dowling	<i>Outdoor rink next to Dowling Leisure Centre</i>

<b>Ward 3</b>	Valley East	<i>Valley East Lions Club Park</i>
<b>Ward 3</b>	Sudbury	<i>Ryan Heights outdoor rink</i>
<b>Ward 4</b>	Capreol	<i>Floor pad inside arena</i>
<b>Ward 4</b>	Skead	<i>Outdoor rink</i>

# ***Future Skate Park Developments***

<b>Ward 4</b>	Garson	<i>O'Neil Drive</i>
<b>Ward 5</b>	Sudbury	<i>South End</i>
<b>Ward 6</b>	Sudbury	<i>Carmichael Arena</i>

# ***Minnow Lake Skate Park Committee***

✦ *Maureen Beausoleil*

✦ *Lionel Rudd*

✦ *Annie Berthiaume*

✦ *Vince Murphy*

✦ *Loretta Lefebvre*

✦ *Kevin Joblin*

✦ *Chris Chitaroni*

✦ *Jeff Bedard*

✦ *John Lindsay*

✦ *Joel St-Marseille*

✦ *Bob Ogilvy*

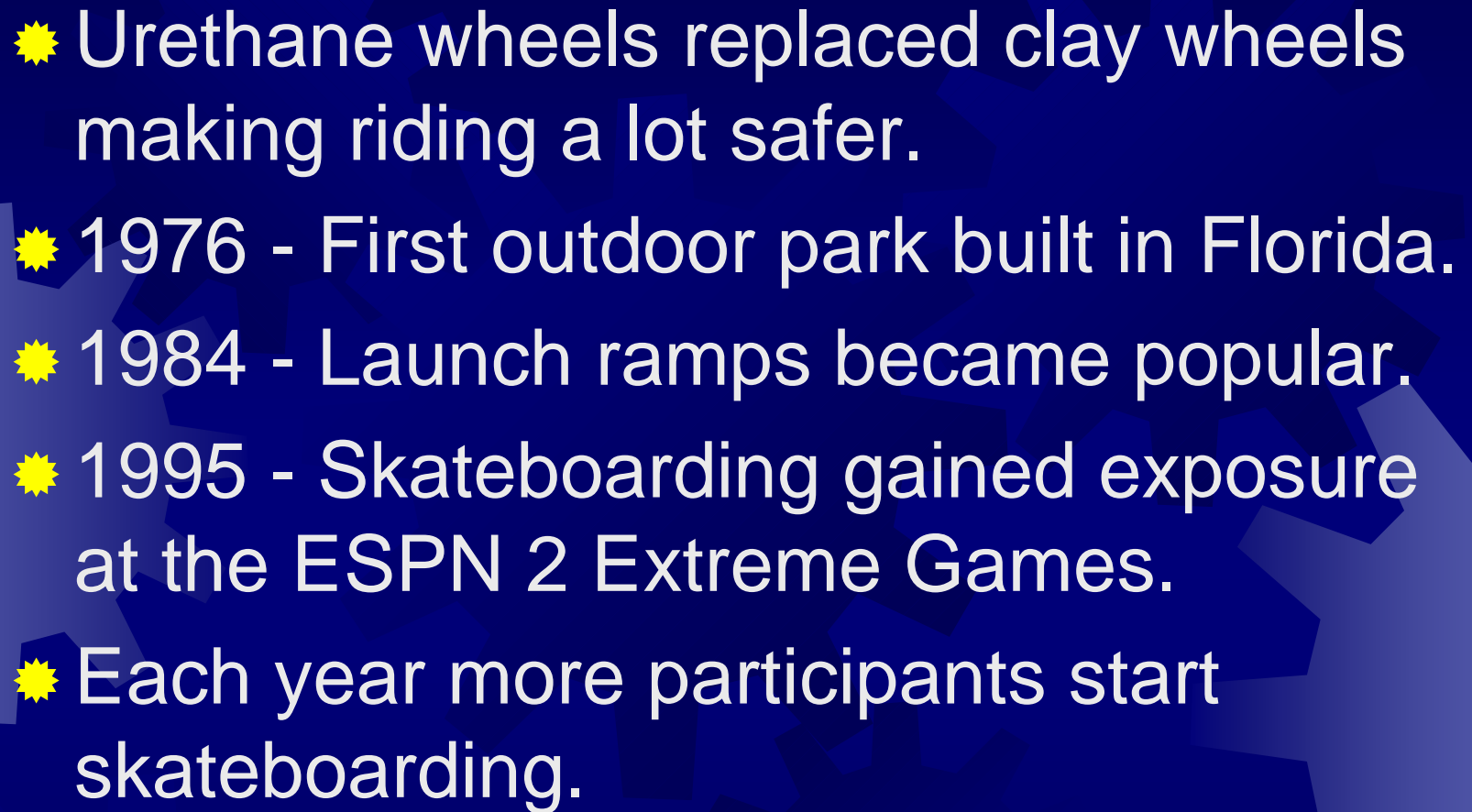
✦ *Armand Jean*

# ***Minnow Lake Skate Park Committee's Objectives***

- ★ Determine an appropriate site for a permanent skate park.*
- ★ Participation in the design process included input from BMXer's, skateboarders and general public.*
- ★ Select a design firm.*
- ★ Recommendation to Council.*

# *History of Skateboarding*

- ★ First skateboards were like scooters, dated back in the early 1900's.
- ★ Over the next five decades kids changed the look of the scooters.
- ★ 1959 - First Roller Derby Skateboard went on sale.
- ★ 1963 - First skateboard contest held in California.

- 
- ★ Urethane wheels replaced clay wheels making riding a lot safer.
  - ★ 1976 - First outdoor park built in Florida.
  - ★ 1984 - Launch ramps became popular.
  - ★ 1995 - Skateboarding gained exposure at the ESPN 2 Extreme Games.
  - ★ Each year more participants start skateboarding.

# *History of BMX*

- ★ 1970's - Californian kids imitated motocross heroes on their 20" bicycles.
- ★ Bob Haro, a skateboarder who adapted his skateboarding moves and tricks to his bike, was one of the first to start BMX free styling.
- ★ Magazine BMX Action, started adding articles relating to freestyling.

- 
- ★ 1989 - Companies and sponsors took over the sport, eventually interest was lost.
  - ★ Kids began to hold their own contests & non competitive events called Jams. They rode for the fun of the sport.
  - ★ Bicycle Stunt series was an event for riders to compete for fun.
  - ★ ESPN Extreme games broadcasted Freestyling, gaining more popularity.
  - ★ Riders fought to keep their sport alive and do not want to lose control of it again.

# STATISTICS

- ☀ Participation is up 36% since 1997.
- ☀ There are over 1 million registered riders in U.S.
- ☀ Approximately 78 skate parks in Ontario.
- ☀ 1996 - Approximately 34,000 youth between the ages of 5 to 19 in Sudbury.



# TYPICAL TOP 10 CANADIAN SPORT INJURIES

HOCKEY	20%
CYCLING	17%
SOCCER	12%
SNOWBOARDING	11%
BASKETBALL	8%
BASEBALL	7%
FOOTBALL	7%
N-LINE SKATING	7%
<b>SKATEBOARDING</b>	<b>5%</b>

INFORMATION OBTAINED FROM RISK MANAGEMENT AND SKATEBOARD PARKS 2001 BY D.R.WYSEMAN.

# ***PARTICIPANTS***

- ✦ Anyone who wants to ride or skateboard can.
- ✦ Not everyone has to do the fancy tricks.
- ✦ Various tricks do require excellent skill, balance, coordination and practice.
- ✦ Excellent spectator sport.



# *LOCATION REQUIREMENTS*



- ✦ BMX & skateboarding should be done where there is smooth, traffic free pavement/concrete.
- ✦ Most cities are building public skate parks to accommodate this sport.

# *Considerations for a Safe Park*

- ✦ Most skate parks are unsupervised.
- ✦ Signage & Safety:
  - ✦ Signs identifying potential risk and recommended safety equipment.
  - ✦ Well designed - separate area for different skill levels, paths run parallel, fenced in area.
  - ✦ Maintenance - routine inspection of sites.

# *Benefits of BMX & Skateboarding*

- ✦ Helps improve the cardiovascular system.
- ✦ Improves balance.
- ✦ Improves fine motor skills.
- ✦ Improves coordination.
- ✦ Increases strength of joints & stability of ligaments around the knees & ankles.
- ✦ Improves self-esteem, self-concept and positive self image.
- ✦ Try a new sport and skills.
- ✦ Getting youth active.
- ✦ Inexpensive.
- ✦ Builds friendship.
- ✦ Helps youth act responsible.

# *Benefits for the Community and Participants*

- ✦ Provides a positive outlet for youth.
- ✦ Economic benefits.
- ✦ Increases positive community image.
- ✦ People from out of town will come to ride or skate at the park, increasing tourism.
- ✦ A safe place to ride or skateboard away from traffic and pedestrians.
- ✦ Safe, clean & positive environment.



# *Carmichael Arena Concrete Park Project*

- ✦ In progress since 2002.
- ✦ Community meetings were held.
- ✦ Community partners: Minnow Lake Lions Club, Rainbow Concrete, Minnow Lake Skate Park Committee and C.G.S.

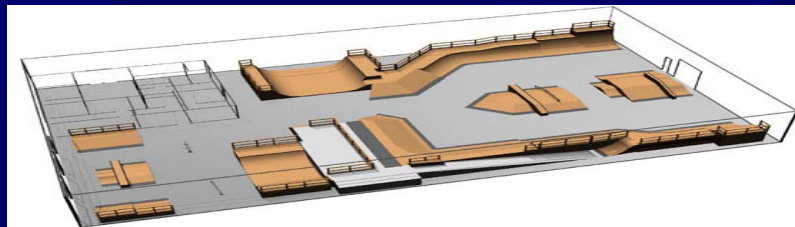
# ***SITE BENEFITS***

- ★ Outdoor facility
- ★ 11,000 sq. ft.
- ★ Accessibility, washroom facilities, distance from houses, terrain conducive to park structure.
- ★ Existing activity site.



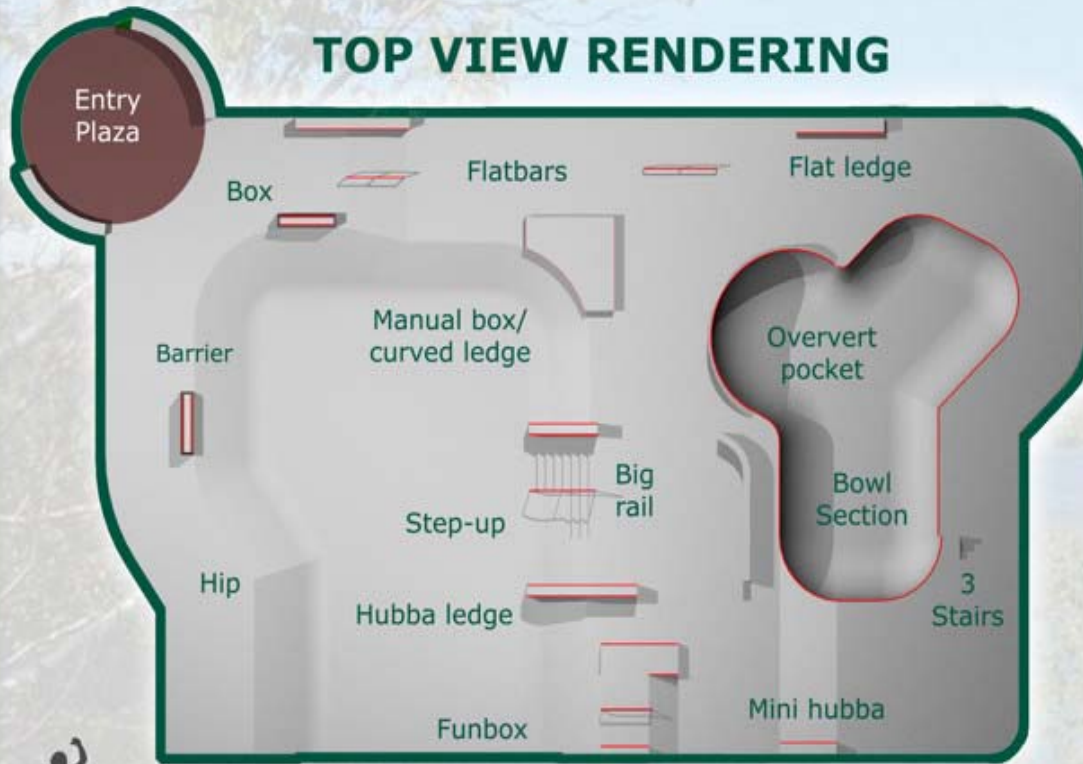
# DESIGN *[by VanderZalm and Associates]*

- ★ Offers a fun & challenging park for all skating abilities.
- ★ Endorsed by local skaters & BMXer's.
- ★ Incorporates separate area for different levels.
- ★ Primary skate runs-design is parallel to avoid collisions.
- ★ Transitions & spacing between obstacles are at appropriate height.
- ★ Public observation & shade areas were incorporated into the design.

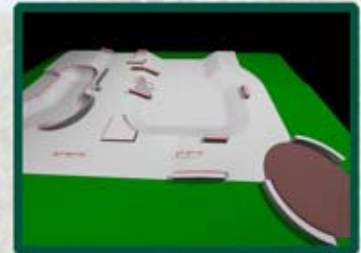


# SUDBURY SKATEPARK

## TOP VIEW RENDERING



## 3D VIEWS

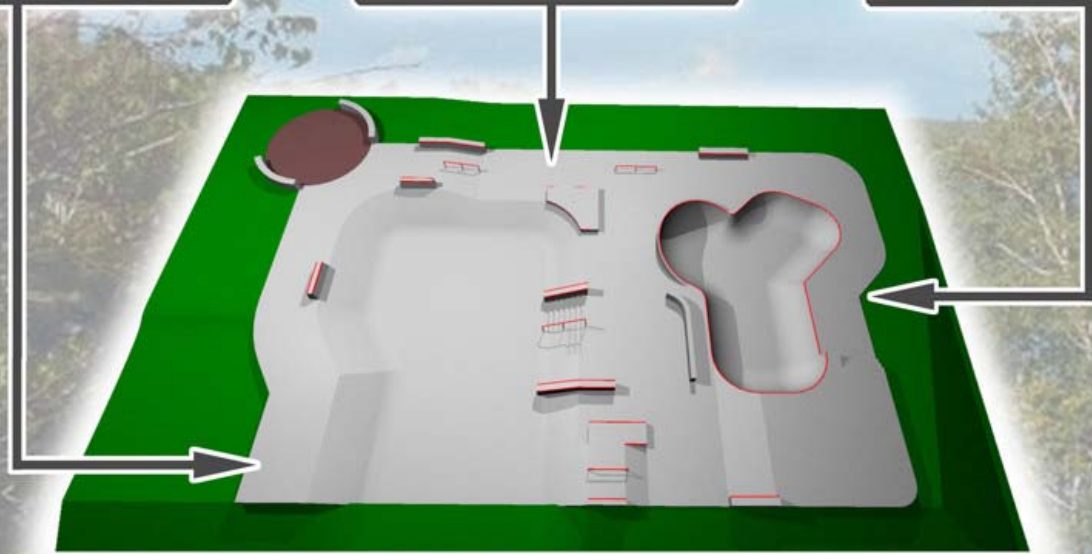
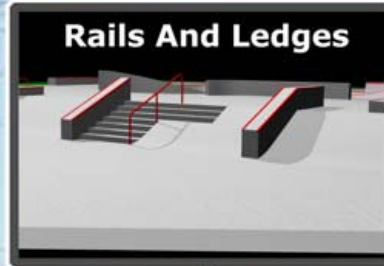
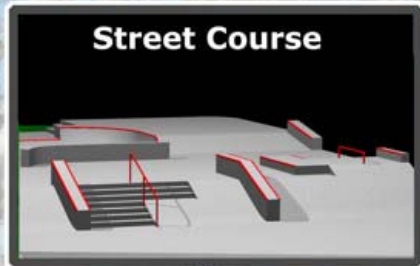


## OVERALL SKATEPARK CONCEPT RENDERING



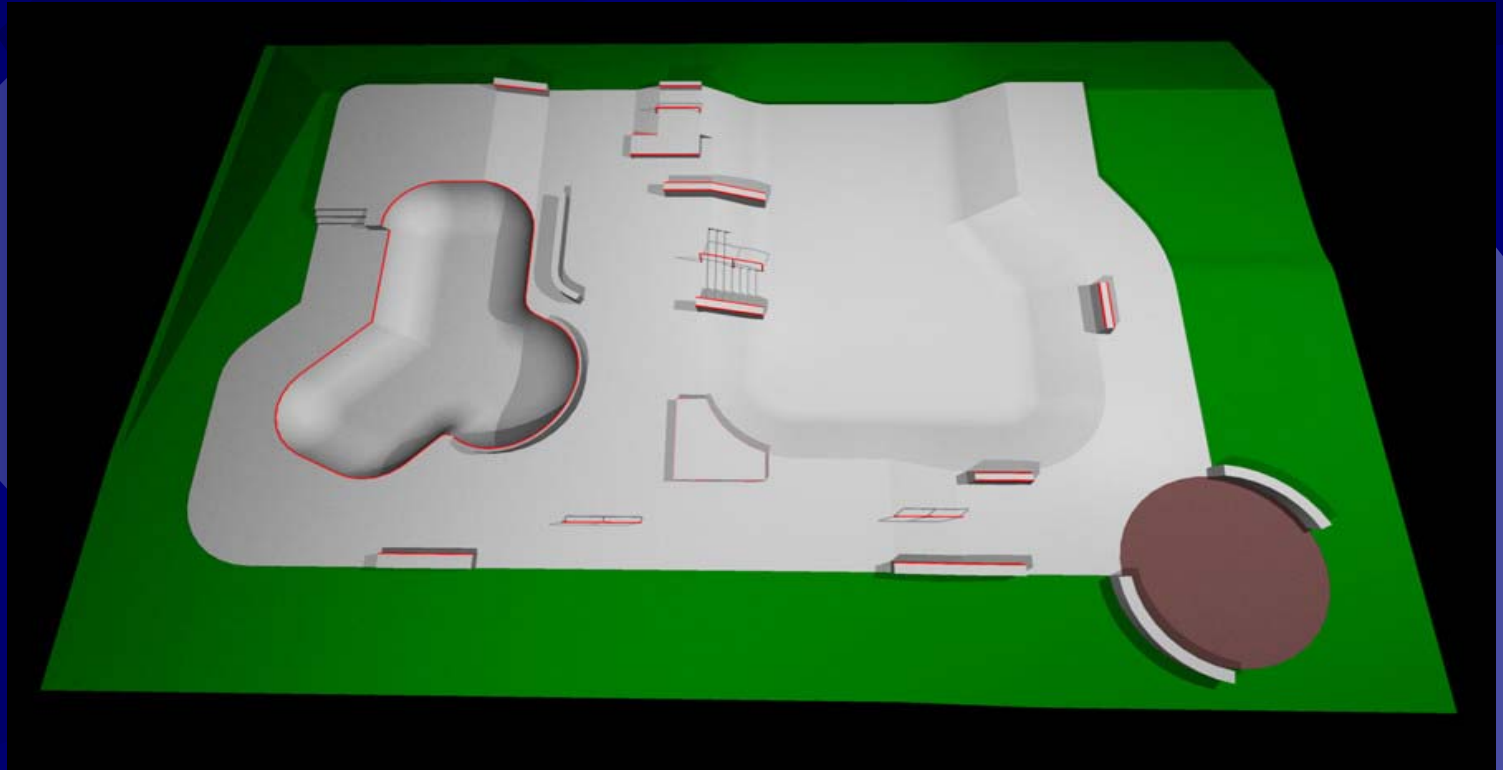
# SUDBURY SKATEPARK

3D CONCEPT VIEWS



3D CONCEPT RENDERING





# Carmichael Arena Skate Park Project Funding

★ *Estimated project cost* ..... \$240,000.

## Committed Funding/Partnerships

➤ 2003 capital funding	\$ 70,000.
➤ Minnow Lake Lions Club	\$ 30,000.
➤ Ward 6 CIP/NPP Funding [ <i>committed 2002</i> ]	\$ 26,000.
➤ Rainbow Concrete Contribution	\$ <u>25,000.</u>
➤ Sub Total	\$151,000.
➤ Less: Plan/Design expenditures	\$ <u>14,850.</u>
➤ Total	\$136,150.
➤ <b>Balance requested from Parks Reserve Fund</b>	<b>\$103,850.</b>

# THANK YOU!

## QUESTIONS

