



# Centre Lionel E. Lalonde Centre (Emergency & Protective Services Centre)

**Priorities Committee Meeting**

**Wednesday, March 21<sup>st</sup> 2007**

Presented By: Tim P. Beadman

Acting General Manager of  
Emergency Services

- and -

Richard Dixon

Facilities Maintenance Co-Ordinator

**Always Prepared.  
Toujours prêts.**



Emergency  
Preparedness

Préparation aux  
situations d'urgence

[www.greatersudbury.ca](http://www.greatersudbury.ca)

[www.grandsudbury.ca](http://www.grandsudbury.ca)

# Centre Lionel E. Lalonde Centre

- Architectural Feasibility Study - authorized by Council July 2004
- Addressed the potential impact of housing a number of City services within the existing building and site
- Ontario's National Boxing Centre was proposed to be off site

# Study Undertaken By NYB August 25, 2005

## Objective

- Maintain continual use of the existing facility and community meeting rooms
- Maintain the buildings use as a training facility
- Maintain existing dormitory space
- Maintain and enhance existing museum features
- Integrate a new satellite police station and associated storage facility
- Integrate the City's Emergency Operations Centre
- Incorporate new fire hall
- Maintain fire fighter training facility - ALERTech
- Integrate Land Ambulance facilities
- Provide required administrative support space and reception areas
- Election Services Storage
- Integrate MASHA (Mines & Aggregates Safety & Health Association) operations

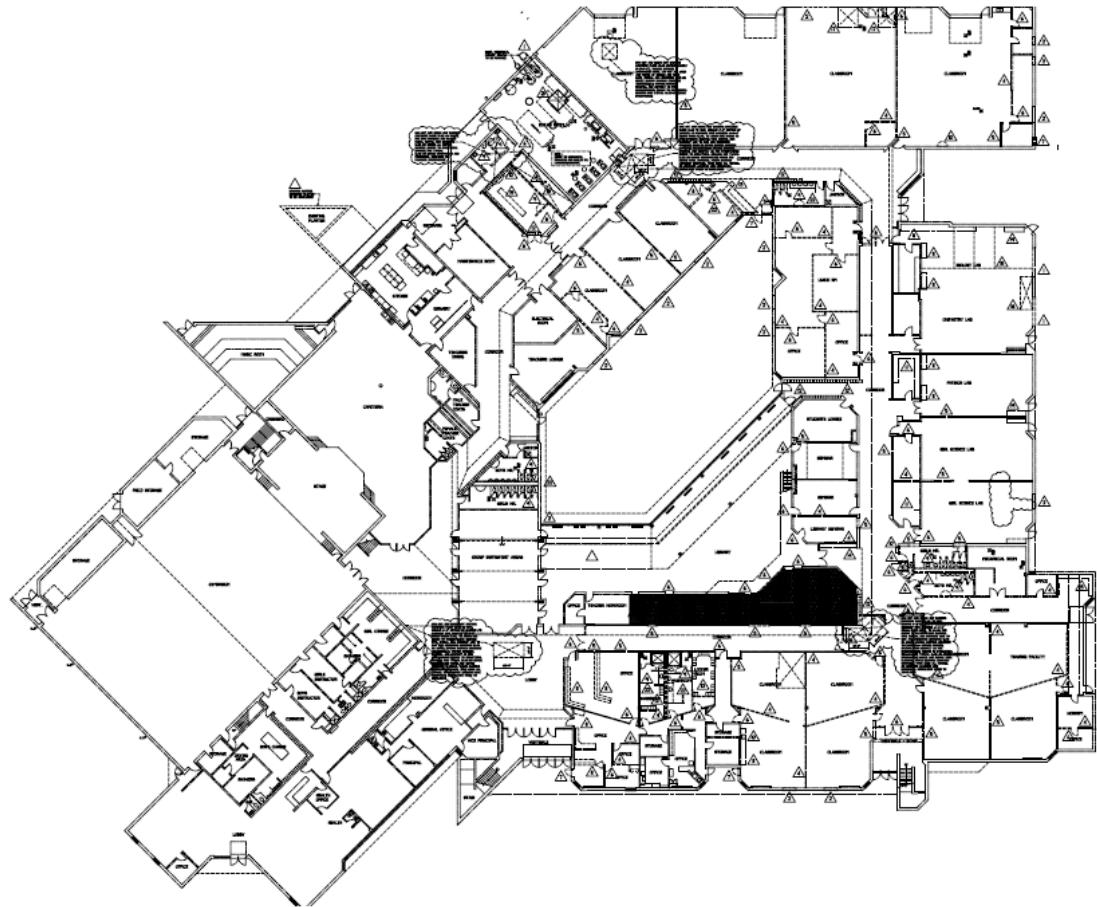
# Centre Lionel E. Lalonde Centre

- 30 year old building; good condition and lends itself to modification for a variety of services
- Property over 40 acres in size
- Adequate space on site to accommodate future expansion
- Under utilized (annual deficit of \$400,000)

# Building Tenants Pre-Construction

- City of Greater Sudbury Police Store Front
- City of Greater Sudbury Collision Reporting Centre
- ALERTech Fire Fighting Training Centre
- Ontario National Boxing Centre
- Rayside Balfour Soccer Association
- Storage Facility for Science North
- Regional Museum
- Meeting Rooms (for C.G.S and Public)
- Election Services Storage

# Centre Lionel E. Lalonde Centre Before Construction



Always Prepared.  
Toujours prêts.



Emergency Preparedness    Préparation aux situations d'urgence

[www.greatersudbury.ca](http://www.greatersudbury.ca)    [www.grandsudbury.ca](http://www.grandsudbury.ca)



# Centre Lionel E. Lalonde Centre Gross Project Cost

- May 2005, Council approved project cost of \$6,200,250 with a levy impact of \$212,900;
- Project would be financed by:
  - \$1,500,000 Land Acquisition Reserve Fund
  - \$69,000 JEPP Grant
  - \$4,631,250 Capital Fund (4-5% interest rate over 15 years with annual repayment of \$431,200)
- And that the project proceeds under a single phase;
- And that the Cross Border accrual not required for cross border billings be credited to the project to reduce the annual financing requirements for this project.

# Centre Lionel E. Lalonde Centre Gross Project Cost

- Water service upgrade to the building and area was required to ensure adequate water supply. This was to proceed by way of Fee By-Law to provide cost recovery from abutting benefiting property owners, with future recovery to be credited to this project
- The gymnasium and fitness centre will continue to be used as a public facility

# Centre Lionel E. Lalonde Centre Post Construction

- Emergency Medical Services, Administration, Training, Fleet
- Fire Administration, Training, Fleet and Prevention
- Operational Volunteer Fire Station
- Satellite Police Station, Collision Reporting Centre, Training and Property Sections
- Emergency Management
- Emergency Operations Centre
- 24/7 C.G.S. Winter Storm Centre

# Centre Lionel E. Lalonde Centre Post Construction

- ALERTech Training Centre
- Cambrian College Pre-Service Fire Fighter Education and Training Program
- Continued use of existing leisure services and gym facilities
- Continued use of community meeting/ conference/ training facilities with dormitory and cafeteria
- Emergency Services back up/alternate Communications Centre
- CLELC Administration Staff
- Potential public emergency evacuation centre (gymnasium)

# Centre Lionel E. Lalonde Centre Main Floor



TENANT AREAS  
Centre Lionel E. Lalonde Centre  
FIRST FLOOR PLAN



Always Prepared.  
Toujours prêts.



Emergency Preparedness    Préparation aux situations d'urgence

[www.greatersudbury.ca](http://www.greatersudbury.ca)    [www.grandsudbury.ca](http://www.grandsudbury.ca)





# Centre Lionel E. Lalonde Centre Gross Project Cost

In May 2005, Council approved gross project cost of  
\$6,200,250.00

Additional Costs (funded by Capital)

- ✓ Roof Repair - \$250,000.00 (life expectancy exceeded & roof leaking)
- ✓ Boiler Room Upgrades - \$450,000.00 (based on engineer's condition report)

**Total costs - \$6,900,250.00**

# Centre Lionel E. Lalonde Centre Project

- April 2006 – Awarded to Tribury Construction Inc.
- Construction began May 2006
- Completion of Phased In Occupancy – July 2007

# Centre Lionel E. Lalonde Centre Challenges

- Manage all facility user needs and expectations within approved gross CLELC project budget
- New Ontario regulations 278/05– Asbestos removal added project cost of **\$110,866**
- Restoration and clean up of soil around previously removed underground fuel oil tank according to MOE regulations
- Re-roofing - **\$223,000**
- Project – Construction Contingency \$350,000 funding:
  - Currently 79 change orders approved - **\$386,000**

# Centre Lionel E. Lalonde Centre Challenges & Future Requirements

Despite the aforementioned challenges presented by this project, the Team's objective remains focused on delivering the Emergency & Protective Services building **on budget** and **without sacrificing objectives (Phase 1)**

## Future Site Infrastructure Requirements: **(Phase 2)**

- Increase parking areas due to higher occupancy loads
- Provide safe emergency routes for emergency vehicles
- Develop functional flow patterns and parking for first responders
- Provide exterior operational areas for police activities
- Ensure 24 hour exterior emergency vehicle storage
- Provide safe egress to and from the building for staff and general public

# Centre Lionel E. Lalonde Centre Future Infrastructure Development

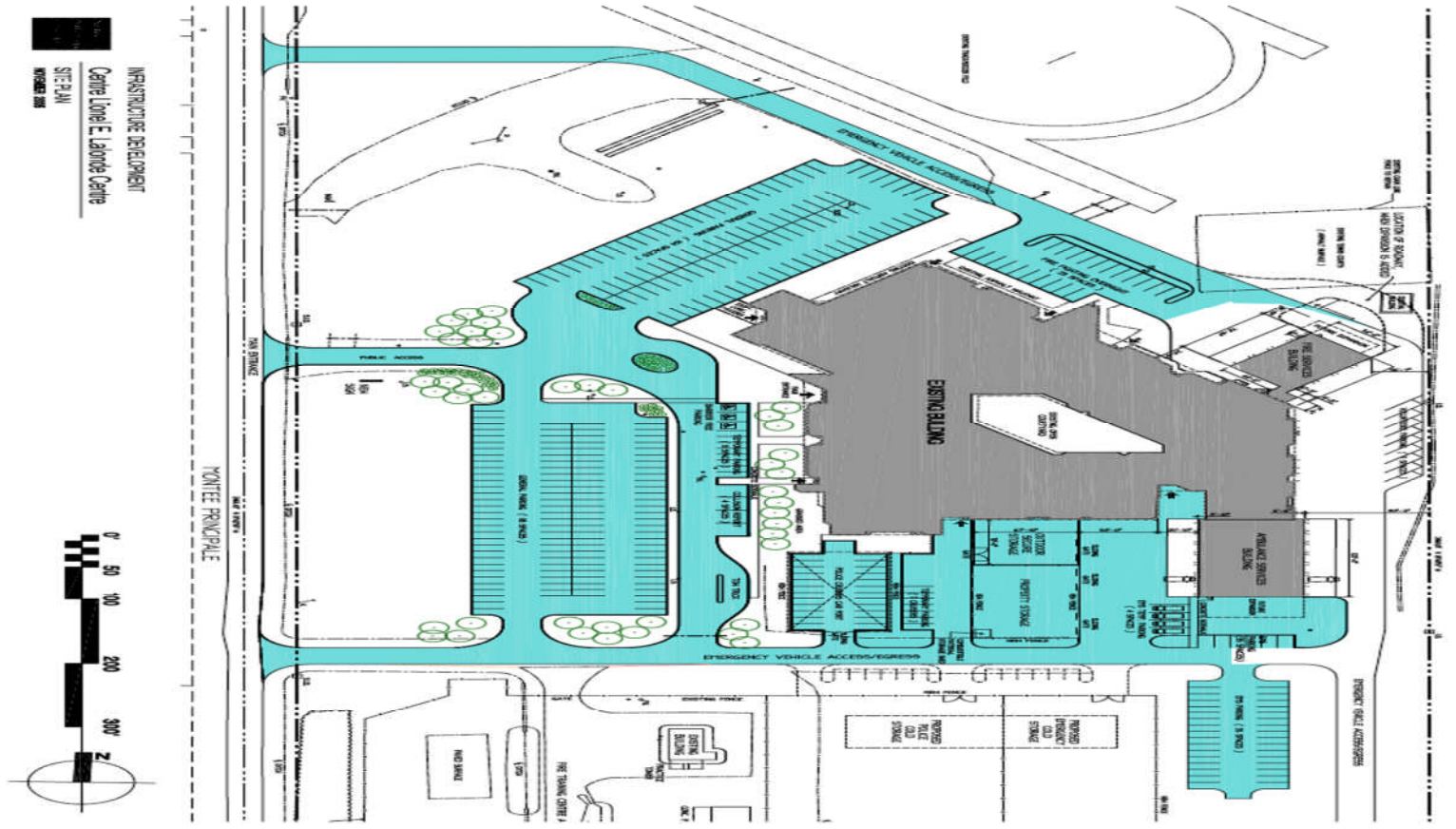
**Estimated Cost - \$2,132,000.00**

## Funding Proposals/ Sources

- ✓ **FedNor & N.O.H.F.C**
  - ✓ **Requesting \$1.5 million dollars in funding assistance**
  
- ✓ **EMS accruals not required for cross border billings**



# Centre Lionel E. Lalonde Centre New Proposed Site Work



INFRASTRUCTURE DEVELOPMENT  
Centre Lionel E. Lalonde Centre  
SITE PLAN  
MAY 2014

Always Prepared.  
Toujours prêts. 

Emergency Preparedness    Préparation aux situations d'urgence

[www.greatersudbury.ca](http://www.greatersudbury.ca)    [www.grandsudbury.ca](http://www.grandsudbury.ca)



# Centre Lionel E. Lalonde Centre Benefits & Future Opportunities

- Centralized Emergency Services administration and operations
- CLELC strategically located facility to provide Emergency Management/ First Responder services to our city and neighbouring communities
- Northern Centre for Emergency Response, HazMat, CBRN, Medium Urban Rescue, Federal/ Provincial Emergency Mobile Hospital storage/deployment location
- Industrial Fire Safety Training
- Northern Ontario Regional Emergency Response Centre – EMS, Fire, EM, Police and Public Works
- Future backup centralized 911 Call Taking, Dispatch & Communications Centre
- Property size is well suited to entertain future municipal and provincial emergency and protective service needs

# Centre Lionel E. Lalonde Centre Training Centre (ALERTech)

- Training Partnerships – OFM, EMO, MNR, Federal/ Provincial Programs, and Ontario Colleges
- Northeastern Ontario Regional Fire Training Centre as satellite of the Ontario Fire College
- Cambrian College Pre-Service Fire Fighter Education and Training Program
- Ongoing City of Greater Sudbury Career and Volunteer Fire Fighter training



# Comments/Questions?